

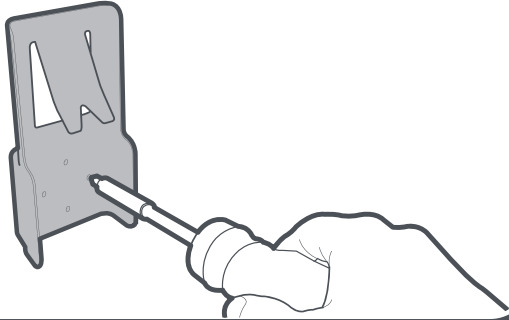
# Instructions For Use

## SafeClip Wall Bracket

1

### Installation

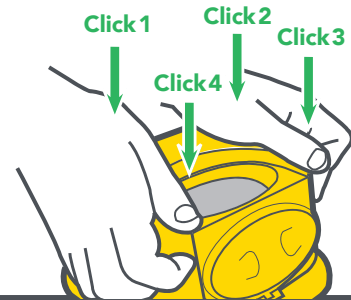
Puncture relevant screw holes and fix the SafeClip wall bracket to a wall or other suitable surface with screws provided.



2

### Assembly

Assemble the container before fitting to the SafeClip wall bracket. Ensure the temporary closure feature is engaged before attaching it to the bracket.

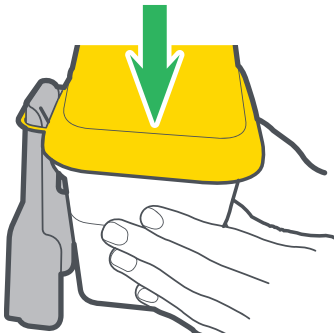


3

### Slide & clip

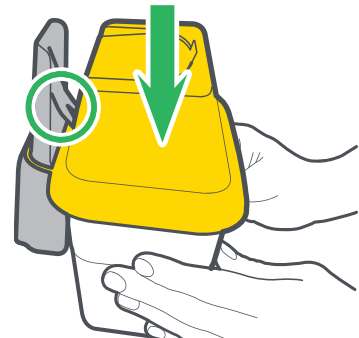
To fit the container to the SafeClip wall bracket, loop the handle over the top of the bracket.

a.



Slide the handle down the bracket until the container engages the clip over the containers rim as shown.

b.

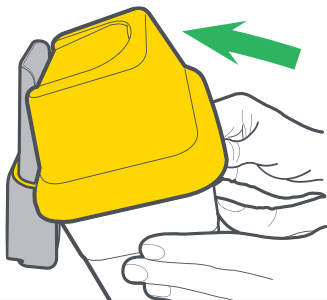


4

### Tip to unclip

To release the container from the SafeClip wall bracket, tip the container backwards as shown.

a.



Whilst in this position using both hands lift the container off the bracket until the handle is clear. *Do not place hands inside container.*

b.

