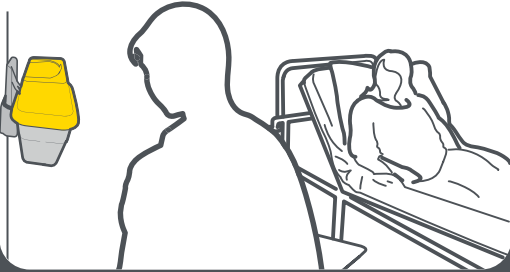


SAFE SHARPS DISPOSAL

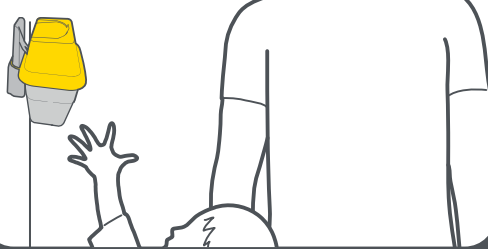
✔ Dos

✘ Don'ts

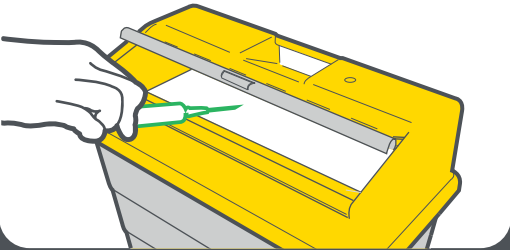
✔ Place containers correctly for sharp disposal at the "point of use"



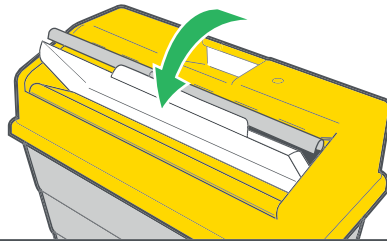
✔ Secure containers at a safe height out of reach of children



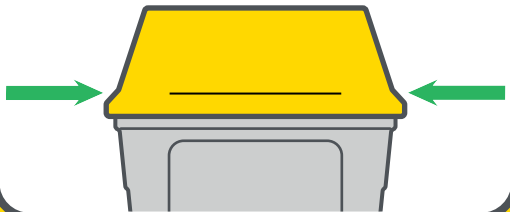
✔ Disposing sharps insert sharp end first; drop, without reaching into the container



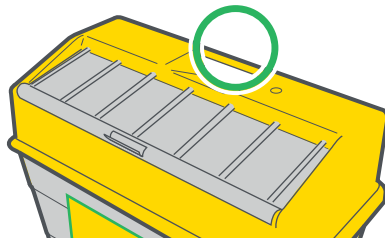
✔ Press the Protective Access lid to dispose of sharps. Ensure the lid returns to form temporary closure



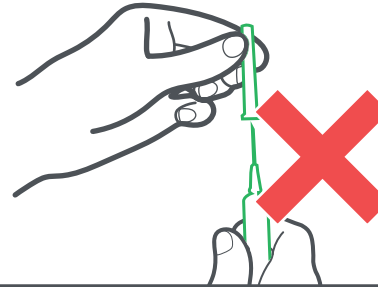
✔ Replace sharps container before the fill line is reached



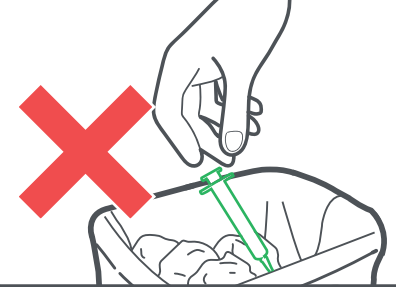
✔ Permanently sealed container before transport and carry by the handle



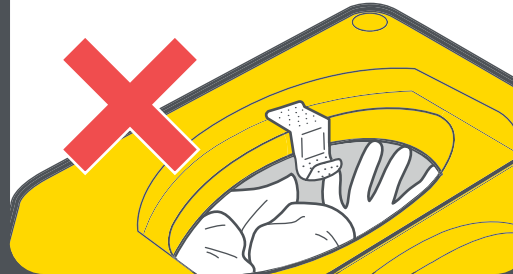
✘ DO NOT recap / re-sheath needles or lancets



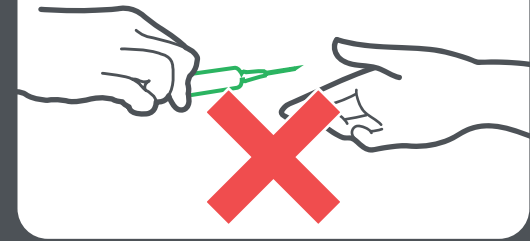
✘ DO NOT place sharps into general waste or recycling bin



✘ DO NOT dispose other items apart from sharps



✘ DO NOT hand over sharps to others or let others dispose of sharp items for you



✘ DO NOT reach into the container



✘ DO NOT hold containers against your body

