



PLASCARE

sharpSAFE

FINAL SHARPS

4L

WARNING: DO NOT FILL ABOVE THE LINE
FILL LINE LOCATED ON L.L.
AUGUST 1998



6

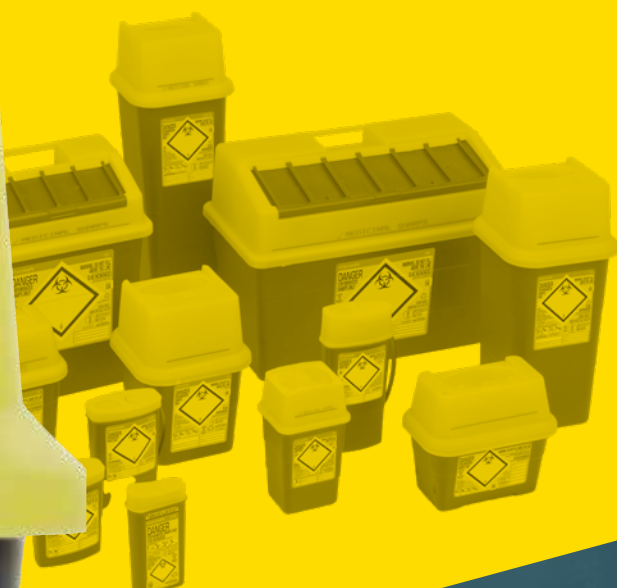
TO BE INCINERATED
OR DEPOSITED BY OTHER APPROVED MEANS, WHERE REGULATIONS PERMIT

UN 3H2/Y2/S/22
GB/3825

 Vernacare
www.sharpsafe.co.uk
Ref: 4190-0104_01

ISO 15110
2007-12:2018
NM 23432

LOCKED BY: _____
DATE: _____
DISPOSED BY: _____



PRODUCT CATALOGUE

2023 EDITION



80% Recycled Plastic

Reducing virgin plastic entering the supply chain



100% Recyclable

Reducing our carbon footprint



Cost Effective

Save money while saving the world



Safe & Secure

Uncompromised protection against needle stick injuries

About Us

For over 30 years, PLASCARE has been committed to promoting health and environmental protection. We distribute Sharpsafe® and Clinisafe® single use containers throughout Australasia, with a focus on providing effective solutions to prevent infections and needle stick injuries while also prioritising environmental sustainability. As a family-owned and operated Australian business, we are agile and dedicated to exceeding our customers' needs. Drawing on our experience in hospital, community, and aged care settings, we have developed extensive knowledge and expertise in all aspects of sharps waste management.

Pioneering Sustainability

Safe and Sustainable Waste Management

At PLASCARE, we are dedicated to optimising the entire production and consumption life cycle, not only for ourselves but also for our partners and customers, in order to minimise our environmental impact. Our new generation Sharpsafe® range has been introduced to decrease our carbon footprint and to provide protection against needle stick injuries. Sharpsafe® containers, which are made from up to 80% recycled polymer, are 100% recyclable when correctly treated, allowing our customers to achieve their environmental objectives. Be a part of the Sharpsafe® evolution – the first complete range of environmentally sustainable disposable sharps containers in the world.

CONTENTS

02	About Us
03	Pioneering Sustainability
06	Why choose Sharpsafe
07	Compliance
08	Complete Range at a Glance
10	Portable Range
12	Primary Care Range
14	Large Volume Range

15	Protected Access Lid Cytotoxic Range
16	Clear Lid Range
17	Clinisafe Containers
18	Clinisafe Cartons
20	Brackets and Trolleys
22	Stands and Trays
23	Product Range Summary



Why choose Sharpsafe containers?

Sharpsafe® is a sharps management system that incorporates practice methodology designed to reduce needlestick injuries and deliver safe and effective management of sharps waste in accordance with international regulations.



Environmentally Sustainable

5th Generation Sharpsafe® — the world's first range of sustainable single-use sharps containers. Made from up to 80% recycled plastic, reducing our carbon footprint.



Safe and Secure Design

Temporary and permanent closures provide enhanced practical safety mechanism.



Storage Saving

Stackable design allows more efficient storage, saving up to 75% space compared to traditional blow mould containers.



Autoclavable

Strong wall integrity allows Sharpsafe containers to be autoclaved safely.



High Quality

Sharpsafe containers are injection moulded for superior quality and consistency than traditional blow mould containers. This enables clear, permanent in mould labels for safer practice.



Compliant

Sharpsafe containers are made and tested to ISO 23907-2:2019 and the first to be awarded NF-X-30-511, the most rigorous European standard for resistance to penetration and impact.



Compliance

ISO 23907-2:2019

The international standard for single use sharps containers. It specifies the requirements for containers intended to hold hazardous sharps medical waste including puncture resistance, drop rupture resistance, fluid tightness and correct labelling.

AS 23907:2023

Australian Standard for sharps injury protection supersedes AS 4031-1992. This standard specifies both design functionality and performance testing, including minimising harmful impacts to the environment and higher penetration resistance.

AS/NZS 3816:1998

Sets out requirements for the identification, segregation, handling, storage, transport, treatment and ultimate safe disposal of clinical and related wastes which may be hazardous, in an environmentally responsible manner.

ADR Regulations

specifies the conditions that must be met by containers used when transporting infectious or associated clinical waste by land. Models of approved containers receive a UN number. All of our containers comply with these technical requirements.

FSC

Covering forestry management, FSC rules are the most comprehensive and FSC social and environmental requirements are the highest.

Complete Range at a Glance

Sharpsafe Range

0.2L 0.45L 0.6L 1L 1.8L 2L 4L 7L 9L 13L 24L 25L 30L 60L

Clear Lid

8L 12L 65L

Cytotoxic

1.8L 4L 9L 13L 24L

Clinisafe Carton

12L 25L 50L

Stand / Tray

25L 24L

Trolley / Bracket

25L 24L

Portable Range

0.2L / 0.45L / 0.6L



For use in first response, accident & emergency medical units, doctors and nurses bags, or for those self-administering medication. The one hand operation and extra high penetration resistance makes the portable range especially safe for transporting sharps in emergency first aid kits.

Sharpsafe portable range enables best practice in sharps disposal

Our portable range containers have the following features:

- Welded construction for added strength and safety
- Temporary and permanent closures with single handed operation
- In-mould label which cannot be removed, even by autoclaving
- Fold away handles for safe transport
- Reinforced base for increased puncture resistance
- Tested to conform to Australian, International standards



Product Data			
Product Code	5173-2430	5170-2430	5150-2439
Size	0.2L	0.45L	0.6L
Useful / Total Volume	0.17L / 0.21L	0.38L / 0.45L	0.45L / 0.6L
Container Dimensions	150 x 75 x 35	170 x 105 x 50	225 x 105 x 50
Opening Dimensions	25 x 20	40 x 30	40 x 30
Wall Bracket		✓	✓
Stand		✓	✓
Petal Opening			✓
Units per Carton	100	100	100
Carton Weight	6.4kg	9.5kg	12.8kg
Carton Volume	0.040m³	0.078m³	0.112m³

What makes the Sharpsafe Portable Range superior to others?

The Sharpsafe portable range is made from up to 80% recycled polymer and is manufactured in accordance with ISO 23907-2:2019. The Sharpsafe portable range gives its users the convenience and security of having a dependable sharps disposal outlet while on the road, whether for emergency, personal or clinical use.



The Sharpsafe range of portable containers can be operated with one hand, allowing users to open and close the container with just one index finger. Users can safely control the sharps with one hand, open the container with the other and carry out disposal in the safest and most efficient manner.



Primary Care Range

1L / 1.8L / 2L / 4L / 7L



Sharpsafe® is the number one brand when it comes to sharps containers intended for use in healthcare institutions.

Developed with sustainability and safety in mind to manage the risks of needle stick injuries. One of the key principles of sharps waste management is to bring the container as close as possible to point of care.

Principles of near patient sharps management:

- Avoid re-capping
- Mount containers onto nursing trolleys
- Stabilise on preparation tables through Sharpsafe Stands
- Bring close to patient with Sharpsafe Near Patient Sharps Trays
- Use the temporary closure and observing fill limits



Safe and Secure



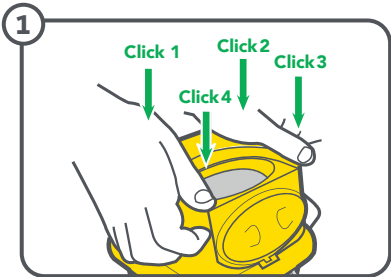
Product Data

Product Code	5160-2439	5050-2430	5140-5439	5100-5439	5110-5430
Size	1L	1.8L	2L	4L	7L
Useful / Total Volume	0.85L / 1.03L	1.45L / 1.75L	1.7L / 2.23L	3.21L / 4.17L	5.55L / 6.76L
Container Dimensions	180 x 108 x 90	220 x 125 x 115	180 x 200 x 125	245 x 175 x 175	380 x 175 x 175
Opening Dimensions	55 x 35	55 x 55	55 x 50	55 x 50	55 x 50
Wall Bracket	✓	✓	✓	✓	✓
NPSD Tray	✓	✓	✓		
Pen Driver Needle Removal	✓	✓	✓	✓	✓
Scalpel Removal	✓		✓	✓	✓
Luerlock Removal	✓		✓	✓	✓
Units per Carton	100	75	50	50	50
Carton Weight	14kg	13.6kg	12kg	16.4kg	22.1kg
Carton Volume	0.092m³	0.093m³	0.089m³	0.125m³	0.185m³

Features

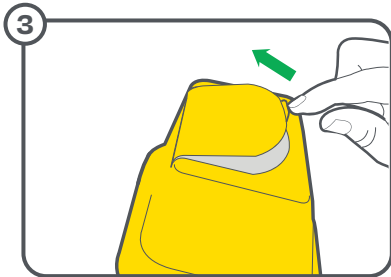
Quick, simple and secure assembly.	✓
2 closure positions on flip top lids: temporary and final, ensuring safety at all times.	✓
Internal safety flap ensures waste does not fall out if container is accidentally tipped.	✓
Clear visible fill line on the translucent lid to identify when container is used/full.	✓
Handle for easy and safe transport.	✓
Nestable design for compact storage	✓
Ideal for community settings or frequent use.	✓

Assembly and Use



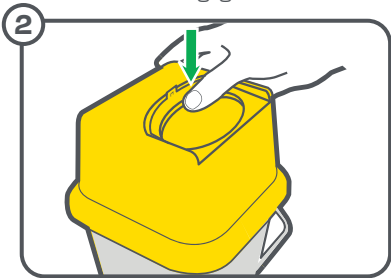
1. Assembly

Place the base of the container on a firm surface, then attach the lid over the base and firmly apply pressure to each corner so that it engages with a "click".



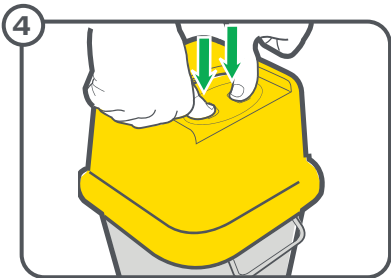
3. Re-Open

Push tab up to release lid from temporary closure.



2. Temporary Closure

Ensure temporary closure is engaged when the container is not in use.



4. Final Closure

Place the container onto suitable surface to lock the Sharpsafe container ready for disposal.

Safety indicators:

- Single finger operation • 1 click heard
- Tab visually in temporary closure position

Safety indicators:

- 2 finger operation • 3 clicks heard
- Tab visually in permanent closure position.

Large Volume Range

9L / 13L / 24L / 25L



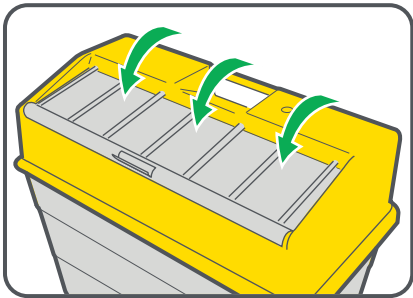
Our large volume range benefits from a large horizontal aperture to allow of easy and safe disposal sharps of all sizes. These containers can be fixed to the wall, table or on a trolley for ergonomic and safe practice.



Product Data				
Product Code	5117-2430	5115-2430	5120-2439	5195-1430
Size	9L	13L	24L	25L XL
Useful / Total Volume	7.52L / 9.50L	10.32L / 12.39L	18.85L / 24.00L	19.60L / 25.20L
Container Dimensions	290 x 290 x 190	355 x 295 x 195	335 x 450 x 230	775 x 285 x 190
Opening Dimensions	210 x 65	210 x 65	365 x 95	260 x 165
Wall Bracket	✓	✓		
Trolley	✓	✓	✓	✓
Units per Carton	20	20	15	10
Carton Weight	12.9kg	14.5kg	16.5kg	16kg
Carton Volume	0.125m³	0.134m³	0.160m³	0.126m³

Final Closing Instructions for 9/ 13/ 24 Litre:

1. Pull flap forward using central tab.
2. Rotate flap down to cover aperture (fold central tab back).
3. Firmly apply pressure along the front of the flap.
4. Ensure flap engages with a "click".



Protected Access Lid

9L PA / 13L PA / 24L PA



Protected Access allows easy disposal of sharps while providing added security for both the user & the public.

- The barrel shaped rotating aperture, provides added security for the user, patients and members of the public. The pivoting safety shield requires clear separation between hand and sharps to ensure safe disposal and further reduce the risk of needle stick injury.
- Discourages using the container for non-sharps waste, avoiding unnecessary waste disposal costs.
- Designed and intended primarily for use in public access areas (A&E, outpatients and anywhere children may be present).



Safe and Secure



Sharps Only



Suitable for Public Access



Product Data			
Product Code	5117-1430	5115-1430	5120-1430
Size	9L PA	13L PA	24L PA

Cytotoxic Range

1.8L / 4L / 9L / 13L / 24L



Cytotoxic waste is any waste that has been exposed to cytotoxic drugs or chemotherapy. Special handling and disposal of cytotoxic waste is required as it presents a health risk for anyone in contact with the waste.

Sharpsafe range of cytotoxic containers come with protective access lids in 9, 13 and 24 litre containers to ensure minimisation of aerosolisation of cytotoxic waste.



Product Data					
Product Code	5050-2421	5100-5420	5117-1420	5115-1420	5120-1420
Size	1.8L	4L	9L PA	13L PA	24L PA

Clear Lid Range

8L / 12L / 65L

Where it is important to safely identify the contents of containers in use, clear lid range is available.



Easy to See



Large Opening



Product Data			
Product Code	36-4208	36-4212	36-4265
Size	8L	12L	65L
Useful / Total Volume	6.5L / 7.8L	9.8L / 11.2L	50L / 65L
Container Dimensions	235 x 290 x 190	310 x 290 x 190	625 x 440 x 320
Opening Dimensions	170 x 55	170 x 55	170 x 135
Scalpel Removal	✓	✓	
Luerlock Removal	✓	✓	
Units per Carton	20	20	5
Carton Weight	11.1kg	11.6kg	10.6kg
Carton Volume	0.108m³	0.118m³	0.106m³

Features	
Safe, quick and simple assembly with audible clicks on each corner to ensure fit	✓
Wide opening & large headroom providing users with sufficient safety buffer	✓
Internal safety flap for extra protection	✓
2 closure positions on the flip top lid: temporary & final closure	✓
Handle for safe transport	✓
Autoclavable to 135°C for 20 minutes for an empty, open container	✓
Conforms to Australian standards	✓

Clinisafe containers

30L / 60L

The large Clinisafe containers have been developed in accordance with the toughest safety standards. They also provide a superior level of ergonomics, sturdiness and hygiene expected by the healthcare professionals and waste collection and treatment companies.

Temporary and permanent closure states allow functional and secure workflow for all clinicians.



Safe and Secure



Fluid Tight

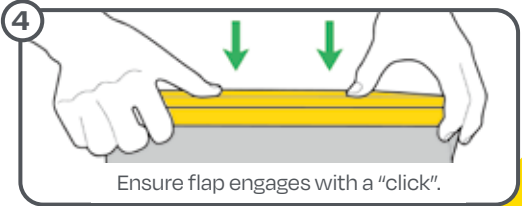
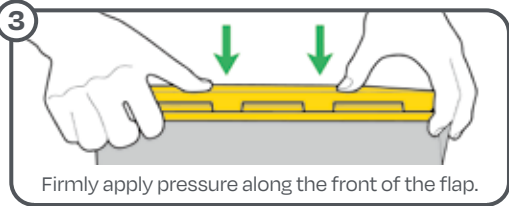
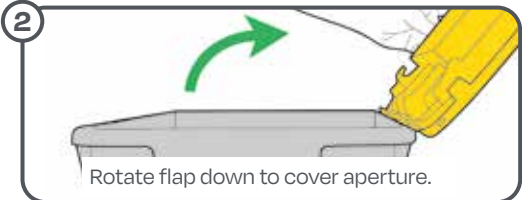
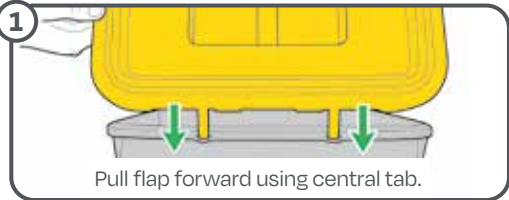


Temporary/ Permanent Closure



Product Data		
Product Code	5185-0000	5186-0000
Size	30L	60L
Useful / Total Volume	24.07L / 28.89L	49L / 58L
Container Dimensions	395 x 295 x 335	395 x 295 x 670
Opening Dimensions	365 x 95	295 x 395
Temporary and Final Closure	✓	✓
Suited to Long Objects		✓
Pedestal Trolley	✓	✓
Units per Carton	10	10
Carton Weight	13.1kg	21.2kg
Carton Volume	0.154m³	0.222m³

Assembly and Use



Clinisafe Cartons

12L / 25L / 50L

The Clinisafe range of Cardboard Clinical Waste Containers is constructed from FSC approved recycled cardboard and contains an integral polyethylene liner with ties for closure.

The environmentally friendly, lightweight design of the Clinisafe cartons allows more containers to be delivered flat packed, reducing transportation cost and carbon emissions, as well as minimising storage space.

Ideal for solid and soft clinical waste, as well as packaged liquids.



Lower Carbon Emissions



Flat Packed Design



Light Weight

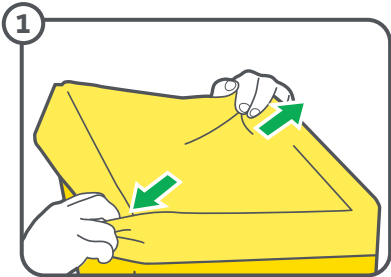


Product Data			
Product Code	36-2000	36-2100	36-2200
Size	12L	25L	50L
Container Dimensions	200 x 200 x 385	370 x 267 x 267	296 x 401 x 435
Opening Dimensions	200 x 200	267 x 267	296 x 296
Units per Carton	10	10	10
Carton Weight	2.2kg	3.5kg	5.5kg
Carton Volume	0.015m³	0.021m³	0.032m³

Features

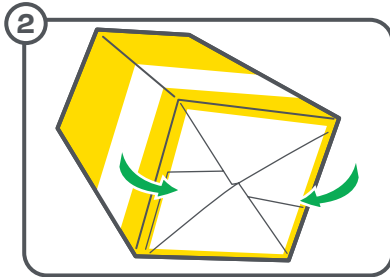
FSC approved materials	✓
UN 3291 and NFX50-507 Certified	✓
Lower emissions and transport cost	✓
Stackable when full	✓
74% Recycled Cardboard	✓
Barcoding for Traceability	✓
Flat packed design for storage	✓

Assembly and Use



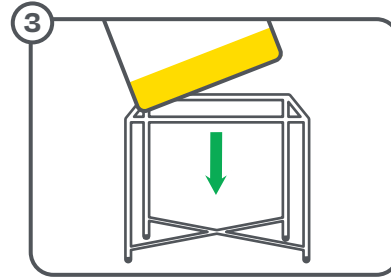
1. To open

Hold two corners of the flat packed box and pull them apart in opposite directions. Place your arm inside the container to help separate if needed.



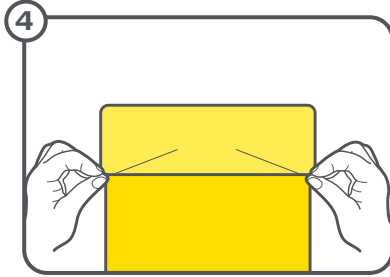
2. Assembly

Turn the carton over and push the sides until the automatic bottom locks open.



3. Place

All cardboard containers should be placed into a plinth to prevent the base of the container getting damaged or wet.



4. Secure the bag insert

Open the bag and place around the perimeter of the carton. Secure in place by folding the bag over each edge of the container.

Brackets and Trolleys

1L / 1.8L / 2L / 4L / 7L 9L / 13L / 24L

Inadequate disposal of clinical waste is one of the leading causes of sharps injuries with 22% of needlestick injuries occurring either during transit to disposal or during the actual disposal of a sharp.

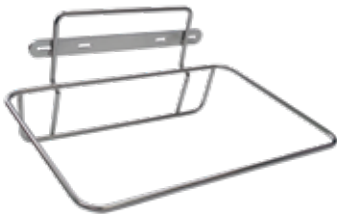
Mounts and brackets support best practice to ensure the safety of health practitioners. Sharpsafe's Near Patient Sharps Disposal system features sharps containment products that are designed to be taken directly to the patient, disposing of the needle at source. This eliminates the risk of carrying sharps to final disposal, and any potential injuries.

Sharpsafe Safe Clip – Universal wall bracket suits wide range of sizes (1L, 1.8L, 2L, 4L, 7L).

Safe Clip
Universal Bracket

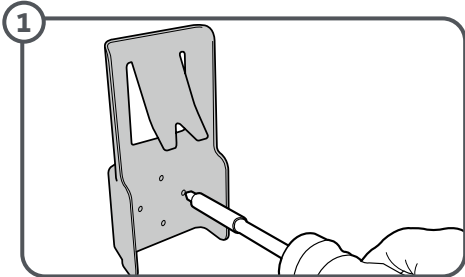


Wall Bracket



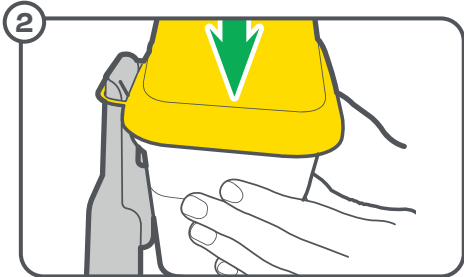
Features	
Universal design to suit range of container sizes	✓
Made from recycled content	✓
Suitable with rubbing alcohol	✓
Retrofits to existing bracket mounts for easy change over	✓

Assembly and Use



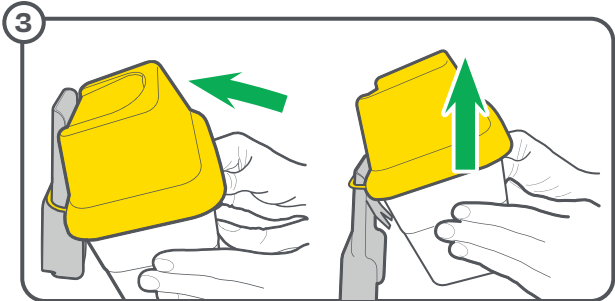
1. Installation

Puncture relevant screw holes and fix the SafeClip wall bracket to a wall or other suitable surface with screws provided.



2. Slide and Clip

Loop the handle over the top of the bracket. Slide the handle down the bracket until the container engages the clip over the containers rim as shown.



3. Tip to Unclip

To release the container from the SafeClip wall bracket, tip the container backwards as shown. Whilst in this position using both hands lift the container off the bracket until the handle is clear.

Trolleys

Pedestal Trolley is lightweight and easily manoeuvrable. It allows sharps containers to be positioned at the point of use & disposal. Designed to accommodate a wide range of Sharpsafe containers and adaptors they are fitted with braking castor for added control and peace of mind.

Features	
Large, easy to clean surface	✓
Easily manoeuvrable trolley frame	✓
Allows for sharps to be disposed at the point of use	✓
Safe and secure transportation	✓
Anti-static castors	✓



25L XL Trolley

Pedestal Trolley

Stands and Trays

0.45L / 0.6L / 1L / 2L / 9L / 13L

Our Sharpsafe trays add extra safety and convenience to our customers, allowing sharps to be disposed of at point of use, thus eliminating opportunities for needlestick injuries.

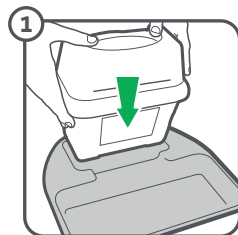
Sharpsafe Portable Stand

NPSD Tray



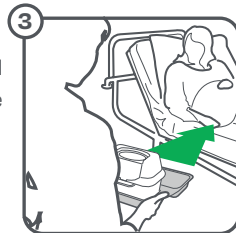
Accessories	Compatible with	Product Code
Sharpsafe 0.45 / 0.6 Litre Stand	0.45/ 0.6L	36-4151S
Sharpsafe 1 Litre Stand	1L	36-4253S
Sharpsafe 2/3 Litre Stand	2/ 3L	36-4205S
Sharpsafe 4/7 Litre Stand	4/ 7L	36-4252S
Sharpsafe 9/13 Litre Stand	9/ 13L	36-4207S
NPSD Tray	1L, 1.8L, 2L, 3L	36-4300

How to use NPSD™



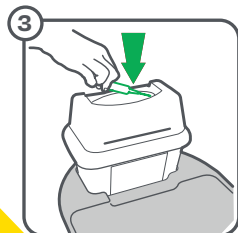
1. Preparation

Select the correctly sized container and tray for the procedure.



2. Point of Use

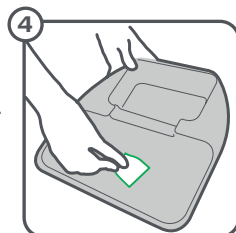
Take the container and tray to the point of use.



3. Waste Disposal

Dispose of sharps waste into the sharps container.

Please refer to page 13.



4. Reuse

Sanitise NPSD tray and ready for the next use.

Product Range Summary

Size	Product Code	Unit Dimensions mm	Carton Dimensions mm	Qty per Carton	Carton Weight kg	Carton Vol m ³
0.2L	5173-2430	150 x 75 x 35	310 x 395 x 330	100	6.4	0.040
0.45L	5170-2430	170 x 105 x 50	350 x 505 x 445	100	9.5	0.078
0.6L	5150-2439	225 x 105 x 50	460 x 525 x 465	100	12.8	0.112
1L	5160-2439	180 x 108 x 90	440 x 545 x 385	100	14	0.092
1.8L	5050-2430	220 x 125 x 115	425 x 595 x 370	75	13.6	0.093
2L	5140-5439	180 x 200 x 125	385 x 595 x 390	50	12	0.089
4L	5100-5439	245 x 175 x 175	840 x 420 x 355	50	16.4	0.125
6L	36-4206	305 x 180 x 180	880 x 365 x 400	30	17	0.128
7L	5110-5430	380 x 175 x 175	815 x 650 x 350	50	22.1	0.185
8L	36-4208	235 x 290 x 190	585 x 415 x 445	20	11.1	0.108
9L	5117-2430	290 x 290 x 190	540 x 590 x 395	20	12.9	0.125
12L	36-4212	310 x 290 x 190	585 x 410 x 495	20	11.6	0.118
13L	5115-2430	355 x 295 x 195	590 x 585 x 390	20	14.5	0.134
24L	5120-2439	335 x 450 x 230	760 x 460 x 460	15	16.5	0.160
25L XL	5195-1430	775 x 285 x 190	315 x 855 x 470	10	16	0.126
65L	36-4265	625 x 440 x 320	710 x 440 x 340	5	10.6	0.106
1.8L CYTO	5050-2421	220 x 125 x 115	425 x 595 x 370	75	13.6	0.093
4L CYTO	5100-5420	245 x 175 x 175	840 x 420 x 355	50	16.4	0.125
9L PA	5117-1430	292 x 195 x 291	585 x 385 x 530	20	14	0.119
9L CYTO PA	5117-1420	292 x 195 x 291	585 x 385 x 530	20	14	0.119
13L PA	5115-1430	355 x 195 x 295	585 x 585 x 390	20	15.3	0.133
13L CYTO PA	5115-1420	355 x 195 x 295	585 x 585 x 390	20	15.3	0.133
24L PA	5120-1430	335 x 455 x 225	749 x 454 x 454	10	12.7	0.154
24L CYTO PA	5120-1420	335 x 455 x 225	749 x 454 x 454	10	12.7	0.154
25L Carton	36-2100	370 x 267 x 267	70 x 530 x 570	10	3.5	0.021
50L Carton	36-2200	296 x 401 x 435	70 x 790 x 585	10	5.5	0.032
30L Clinisafe	5185-0000	395 x 295 x 335	640 x 590 x 410	10	13.1	0.154
60L Clinisafe	5186-0000	395 x 295 x 670	890 x 610 x 410	10	21.2	0.222

Accessories	Product Code	Compatible with	Qty per Carton
Wall Brackets and Trays			
Safe Clip Wall Bracket	36-4500	1L, 1.8L, 2L, 3L, 4L, 7L Sharps Containers	10
NPSD Tray	36-4300	1L, 1.8L, 2L, 3L Sharps Containers	10
0.45/ 0.6 Litre Wall Loop Bracket	36-4250B	0.45L, 0.6L Sharps Containers	10
9/ 13L Wall Bracket	36-4115WB	8L, 9L, 12L, 13L Sharps Containers	50
9/ 13L Hook Bracket	36-4115HB-N	8L, 9L, 12L, 13L Sharps Containers	50
Stands			
0.45/ 0.6 Litre Stand	36-4151S	0.45L, 0.6L Sharps Containers	-
1 Litre Stand	36-4253S	1L Sharps Container	-
2/ 3 Litre Stand	36-4205S	2L, 3L Sharps Containers	-
4/ 7 Litre Stand	36-4252S	4L, 7L Sharps Containers	-
9/ 13 Litre Stand	36-4207S	9L, 13L Sharps Containers	-
Cardboard Carton Plinth	36-2200SB	Clinisafe Carton 50L	-
Trolleys			
Plascare Pedestal Trolley	36-4480	9L, 13L, 24L Sharps Containers	-
Plascare 65L Trolley	36-4595	65L Sharps Container	-



PLASCORE

Plascore (Aust) Pty. Ltd.

58C Dougharty Road

Heidelberg West, VIC, 3081

T 03 9458 5118

sales@plascore.com.au | www.plascore.com.au

ABN 64 007 121 977